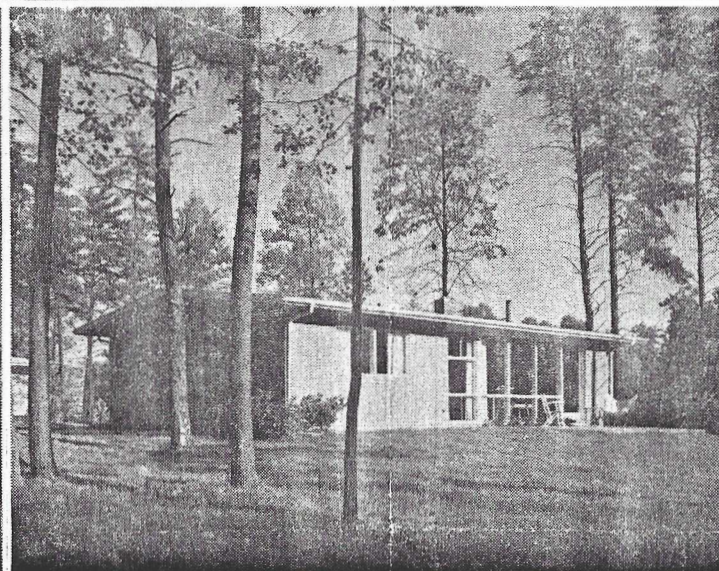
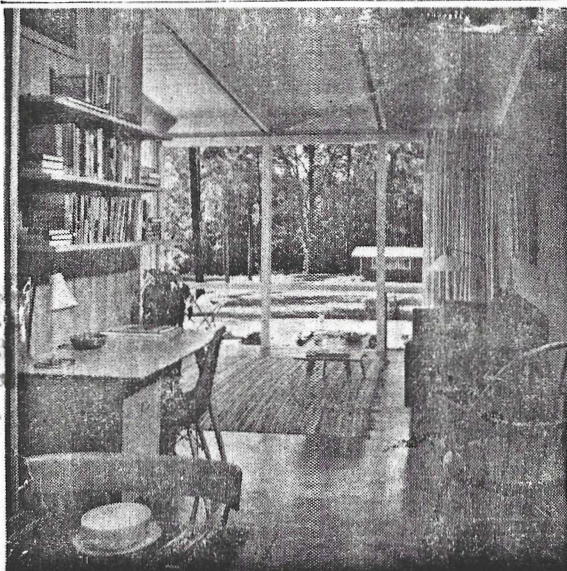
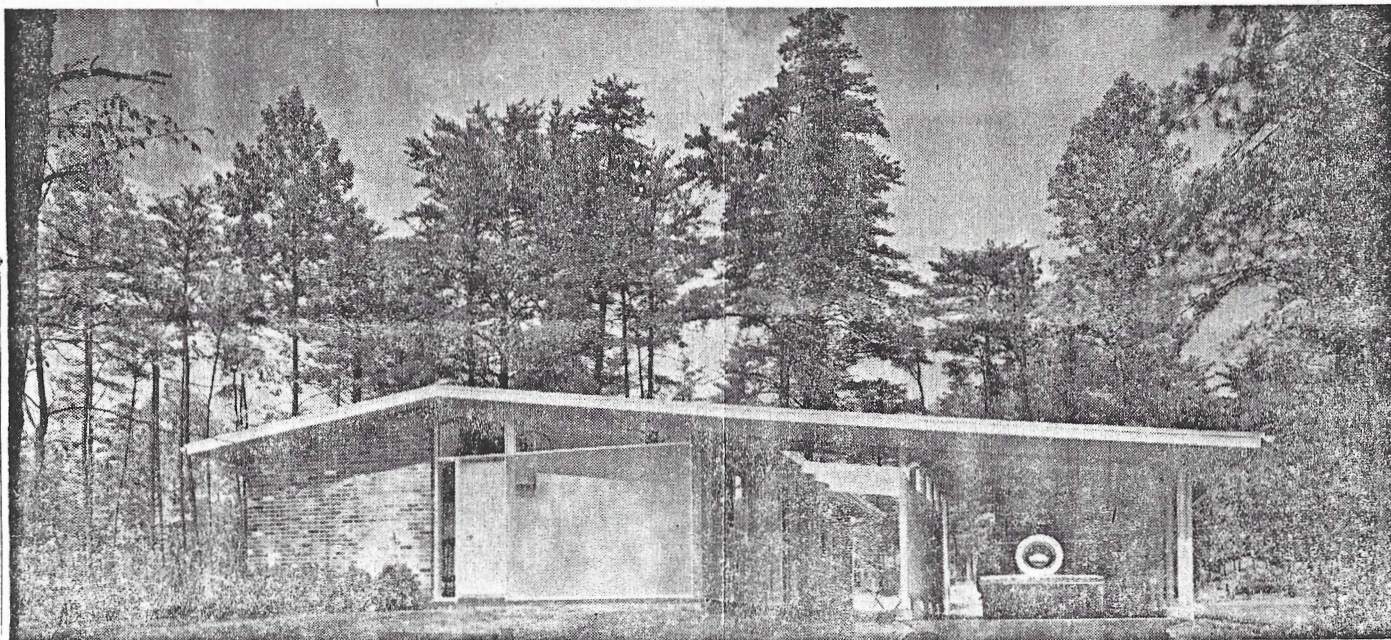


The Evening Star

WASHINGTON, D. C., SATURDAY, JANUARY 17, 1953



ARCHITECT - DESIGNED SUBDIVISION—The houses shown on this page are architect-designed, and are in a subdivision that was planned by the architects. It is located on Arlington boulevard, three miles beyond Seven Corners, in Fairfax County. Known as Pine Spring, it will have 125 single-family homes when completed next summer. Architects are Keyes, Smith, Satterlee & Lethbridge. Photo above shows part of living room from dining area.



EACH HOUSE HAS CARPORT—A widely extended roof over the carport adds to the apparent size of houses in Pine Spring. The 125 houses will have a total of five floor plans and 20 other variations. Each has a carport.

THIRTY NOW OCCUPIED—About 30 of the Pine Spring homes are occupied so far. Architecture is frankly contemporary, and apartments to be started later will be of a design harmonizing with the single dwellings. Center photo above shows general view of the house, with glass walls facing south. Photo directly above shows part of dining area and the louvred carport beyond. —Photos by Robert C. Lautman.